



Cloud 9 Infosystems

BUILD BUSINESS APPS FAST WITH POWER APPS

Aniket Wani

AGENDA

Why PowerApps?

PowerApps lets you..

Used Cases

Demo

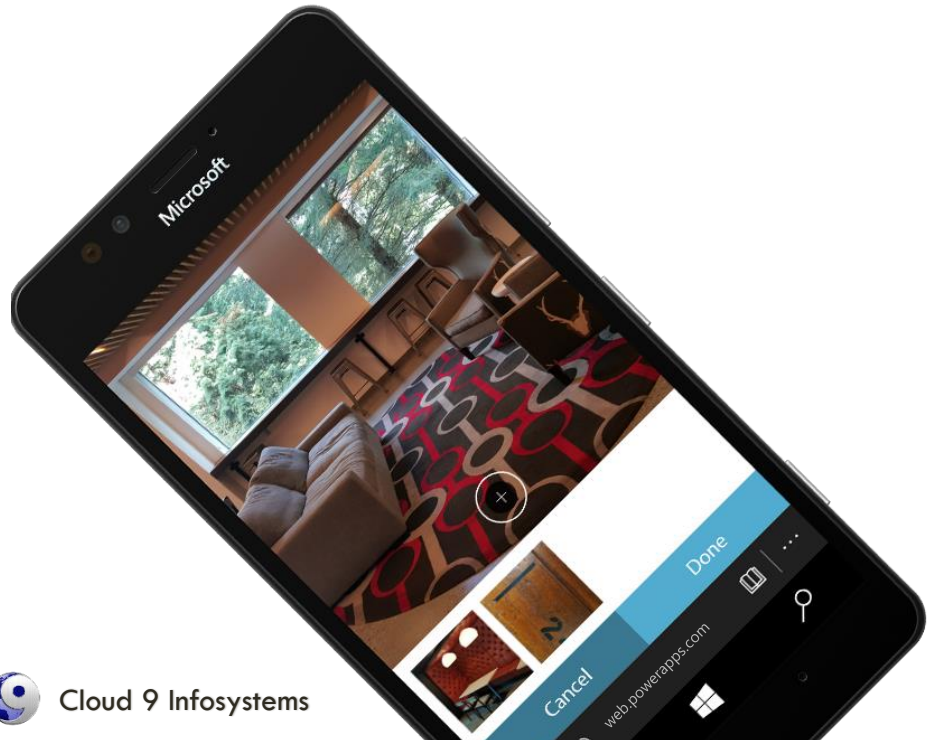
WHY POWERAPPS?

Not enough skilled mobile developers

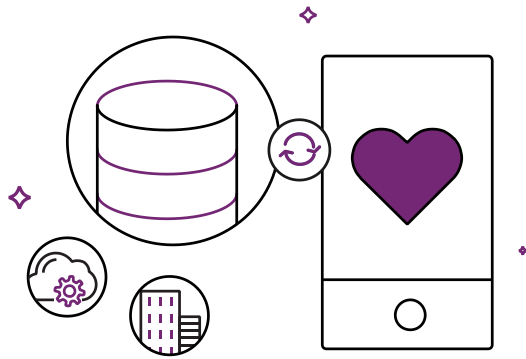
Business data proliferation

IT agility and app sharing

MICROSOFT POWERAPPS HELPS USERS BUILD AND DEPLOY BUSINESS APPS EASILY.



POWERAPPS LET'S YOU



Connect your business applications to cloud services and on-premise systems.



Quickly create apps that work on any device using a Microsoft Office like experience.



Publish and share apps instantly for web and mobile within your organization.

An isometric illustration of a construction site. In the center, a large smartphone is shown in a dark blue frame. The phone's screen displays a construction site with a red dirt area, a white concrete slab, and a yellow crane. The background shows a construction site with yellow cranes, blue trucks, and stacks of white materials. The overall scene is set against a dark blue background with a light blue grid pattern.

USED CASES

ECONOMIC CALLOUTS APP

analyze **11 DATA SOURCES** to determine approach to resolution

GENERATE prescribed action based on real-time data

create **AUDIT TRAIL** on SharePoint Online to record decisions

generate **REPORTS** for managers to compare cost avoidance with net benefit

“Not only have we solved an important business problem, we have delivered the solution at a fraction of the traditional IT project cost – both from an implementation and a TCO perspective. The solution paid for itself in a mere two weeks!”

- Nipa Chakravarti, Vice President of IT at TransAlta.

The screenshot displays the 'Call Out Guidelines' interface. At the top, it shows the date '2016/08/16' and the site 'Soderglen Wind (GWW1)*'. Below this is a table with columns for 'Time', 'Site', 'Turbines', 'Fault Code', and 'Benefit'. The table lists two turbine entries with their respective fault codes and benefits. A detailed view of a fault is shown on the right, including a 'Fault Description' of 'Manual Stop', an 'Action' of 'Manual Start (VNC into Tower PC)', and 'Techs Required' of 3. The TransAlta logo is prominently displayed in the bottom right corner of the screenshot.

| Time | Site | Turbines | Benefit |
|-------|------------------------|--------------------|--|
| 16:00 | Soderglen Wind (GWW1)* | 1 | 836.13 |
| | | Fault Code: 1 | <input checked="" type="checkbox"/> Dispatch |
| | | Remove Edit Cancel | |
| | Soderglen Wind (GWW1)* | 2 | 1867.25 |
| | | Fault Code: 3 | <input type="checkbox"/> Dispatch |
| | | Remove Edit Cancel | |



AUTOMATING EQUIPMENT REPAIR PROCESS FOR ELECTRIC MOTORS

REDESIGN & DIGITIZE
paper based process

**ELECTRONIC
PROCESS**
independent of ERP

STANDARDIZE
processes & reports
across locations

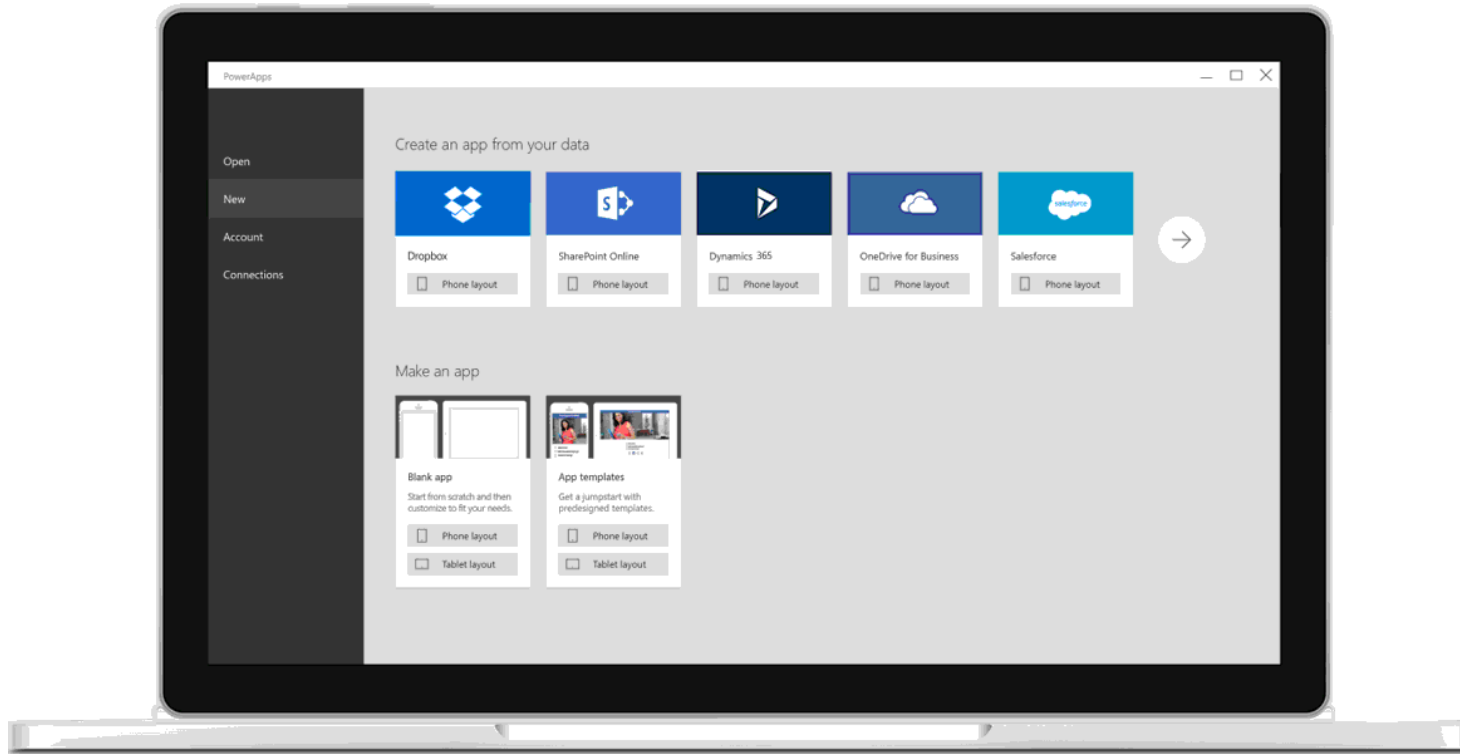
ITERATE and
REFINE solution



"In collaboration with our trusted Microsoft partner we reimagined our previous data collection, work logging and report generation processes, improving productivity by an estimated 15% in factories that have implemented the PowerApps-based solution."

- Scott Melzer, Vice President of IT & Purchasing IPS





DEMO

LET'S SUMMARIZE

Build modern business apps – FAST

Empower your power users to build business solutions without writing any code!

Improve the efficiency of your IT department

Seamlessly share useful apps within your organization quickly

AZURE EVERYWHERE FREE ASSESSMENT

Focus on Business not Infrastructure

Plan your migration off unsupported servers

Business Intelligence & Analytics

Business Continuity

Azure PaaS

Dynamics ERP in the Cloud

Contact:-

bertp@cloud9infosystems.com

855-225-6839