



Cloud 9 Infosystems

LEVERAGING THE POWER OF AZURE SQL DATA WAREHOUSE WITH BI

OCT 2017

AGENDA

What is Azure SQL DWH

Why Azure SQL Data Warehouse?

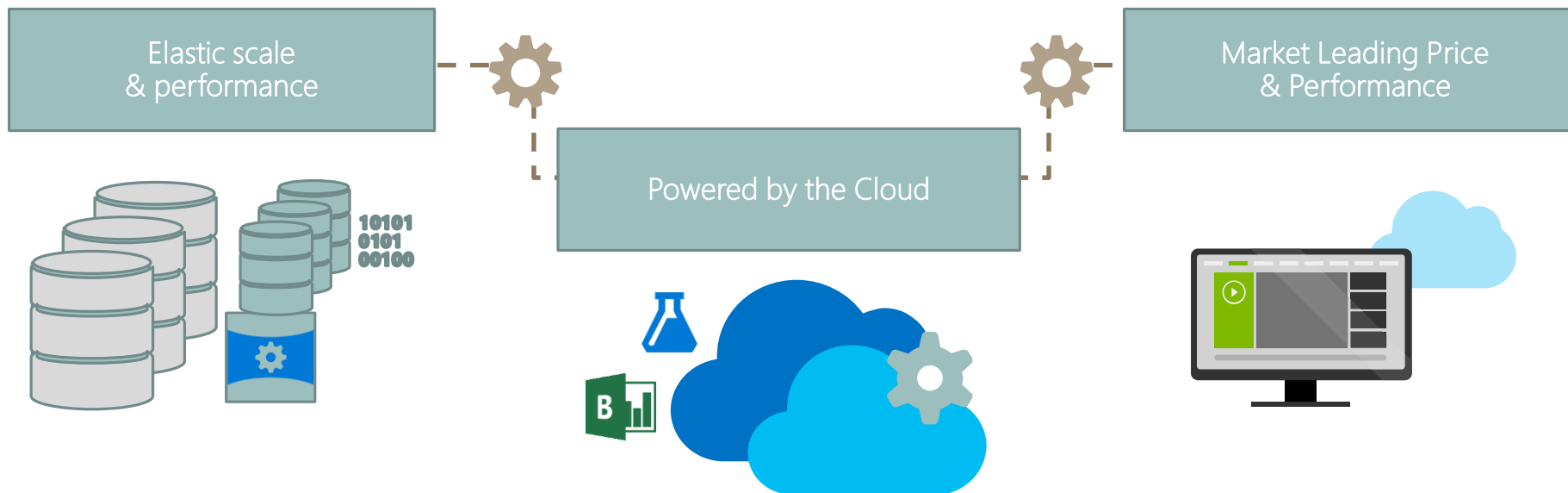
What is Power BI?

Use Power BI with Azure SQL DWH

Demo

WHAT IS AZURE SQL DATA WAREHOUSE?

- Scale-out database can process Relational and Non-Relational Data
- Resides onto Azure Cloud Platform
- Pause performance to save the compute costs



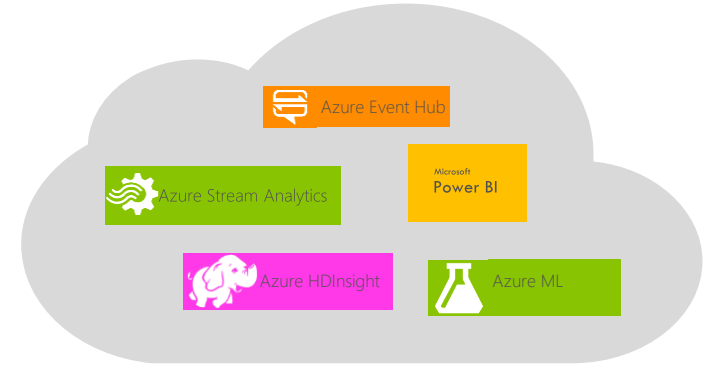
AZURE SQL DW AGAINST SQL DB

- Geared towards OLAP
- It's a Massively Parallel Processing system (MPP)
- Scale up and down in couple minutes
- Pause compute resources
- Supports PolyBase
- Data Organized

BROAD ECOSYSTEM

Tightly Integrated with Azure Machine Learning, Power BI, Azure Data Factory, Stream Analytics and more

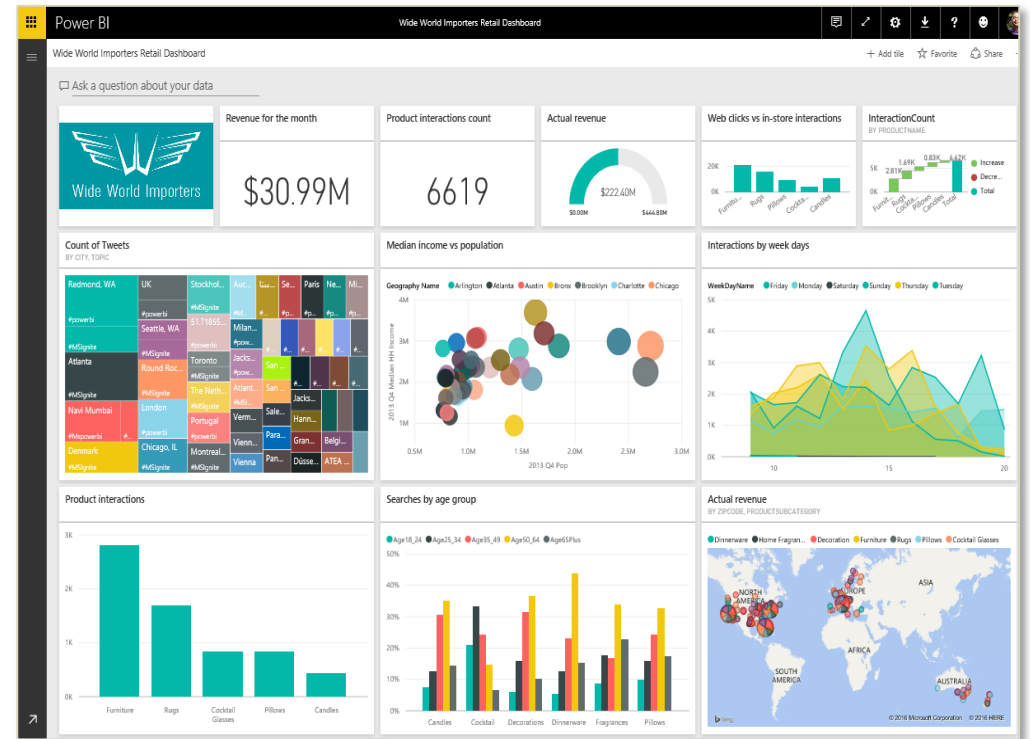
Deep tool integration with top partners



WHAT IS POWER BI?

Power BI

- Industry-leading SaaS service
 - 5 seconds to sign up, 5 minutes to WOW
- Large Power BI ecosystem
 - ISVs, SIs and partners creating unparalleled momentum
- Integrated across Microsoft products
 - Customers benefit from integration with other Microsoft products



USING AZURE SQL DW IN POWER BI

Using the Open In Power BI button in Azure Portal

Using in Power BI Service

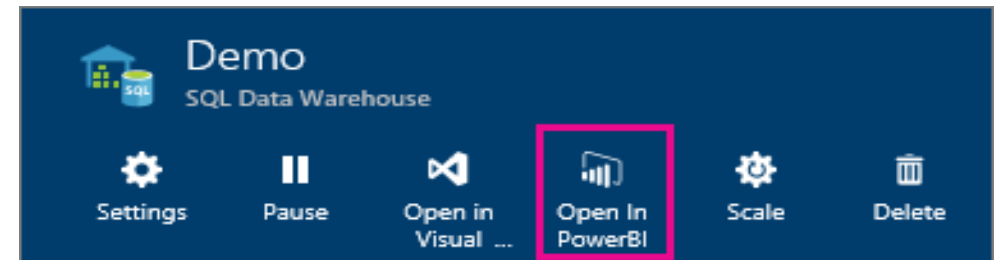
Open in Power BI Desktop

DEMO

Scalability Demo

Using the Open In Power BI button

Pause the compute resources Demo



SUMMARY

Azure SQL Data Warehouse is scalable and cost efficient solution

Simple to Create Analytical Power BI Solution with Azure SQL Data Warehouse

AZURE EVERYWHERE FREE ASSESSMENT

Focus on Business not Infrastructure

Plan your migration off unsupported servers

Business Intelligence & Analytics

Business Continuity

Azure PaaS

Dynamics ERP in the Cloud

Contact:-

bertp@cloud9infosystems.com

855-225-6839

Q & A